



ME-25 ReleaseNote



Tones of the Top 100 Guitar Songs, Vol. 4

© 2012 Roland Corporation U.S.
All rights reserved. No part of this publication may be reproduced in any form without the written permission of Roland Corporation U.S.

ME25RN04

A Note from BOSS

Each of these patches represents a tone from a famous song. Since some songs have multiple tracks with different tones, we chose the tone we felt was most identifiable with the song. Of course, your own guitar will affect the tone you get, so we're including recommendations with each patch as to whether you should use a single coil ("SC") or a humbucker ("Hum"). If you have both types, try using the suggested pickup first.

Whatever amp you use, start by using a clean setting with the Tone control set flat. (You can always quickly audition your amp's tone by engaging the ME's tuner—turning on the tuner bypasses the ME-25.)

To make the patches sound most exactly like their recordings, try and use the same guitar the artist originally used. On the other hand, you might just create a great tone by using a different guitar than the original artist. Enjoy your ME-25!



All patches in this volume have the SOLO pedal set for a lead boost except 16 and 25. Patch 15 has the pedal assigned to tap a 1/4-note delay rate, and 25 has the pedal assigned to a dotted-eighth delay rate. Wah is assigned on 16 and 19—click forward to turn it off.

About Loading Your Downloaded Patches

When you load your new patches into your ME-25, they replace your existing User patches in the ME-25's memory. Since you probably want to keep your User patches, here's how to safely store them on your computer using the Librarian application that came with your ME-25. You can then re-load them whenever you want.



If you've already got the ME-25 Librarian installed and set up, you can jump now to "Backing Up Your User Patches" on page 3.

Setting Up and Understanding the ME-25 Librarian

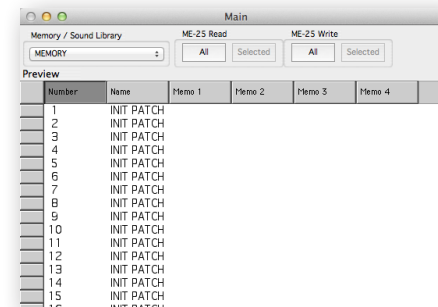
Installing and Configuring the Librarian

- 1 The ME-25's Librarian and driver software is available on the ME-25 Downloads tab at RolandUS.com. (Click [here](#).)
- 2 Download
 - *the ME-25 driver*—for your computer's operating system.
 - *the ME-25 Librarian*—for your computer's operating system.
- 3 Follow the included instructions to install the driver software.
- 4 Install the Librarian according to the included instructions.
- 5 Launch the Librarian.
- 6 Click the Setup menu, *Set Up MIDI Devices...*
- 7 Set the ME-25 as follows:
 - *Input*—ME-25
 - *Output*—ME-25

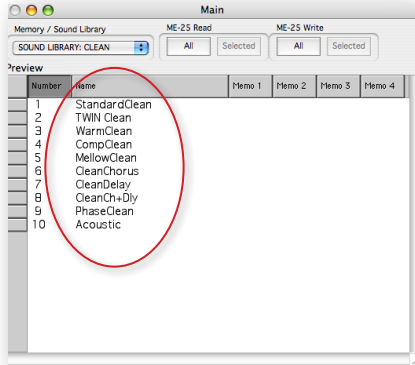
Understanding the Librarian

The Librarian has two types of windows:

- *the Main window*—shown below. The Main window exchanges patches with the ME-25.



- *library windows*—that contain collections of patches, such as the Acoustic window shown below. To get a patch or group of patches from a library into your ME-25, you must first copy them into the Librarian’s Main window. To add patches to a library, you copy them from the Main window.



Library files have a “.m2l” file extension.

- 3 After the data’s been retrieved from the ME-25, select **Duplicate** from the Librarian’s File menu—the Librarian creates a new library that contains all of the patches you grabbed from the ME-25.
- 4 Select **Save As...** from the file menu and select a location on your computer’s hard drive in which to store your User patches.



Library files have a “.m2l” file extension.

In the future, you can open this library and add or remove patches to keep all of your ME-25 patches stored in an order that makes sense to you.

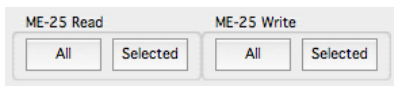
You can return patches to the ME-25’s memory by

- 1 opening the library
- 2 copying the desired patches into the Main Librarian window
- 3 sending them back to the ME-25 using the Write All or Write Selected buttons at the top of the Main window.

Backing Up Your User Patches

Now that you have the Librarian ready to go, here’s how to back up your existing User patches and then load your newly downloaded patches.

- 1 At the top of the Main Librarian window, there are four boxes:



You can retrieve all of the patches in the ME-25’s User bank for storage, or just the desired patches.

- 2 To grab
 - *all of the patches in the User bank*—click Read All.
 - *specific patches*—command-click (Mac) or control-click (Windows) the patches you want and click Read Selected.

Loading Your Downloaded Patches Into the ME-25

- 1 Open one of the new ME-25 library files you downloaded.
- 2 Copy and paste its patches into the Librarian’s Main window.
- 3 Click on Write All—or select only the desired new patches, and then click on Write Selected—to load the patches into the ME-25’s User memory.

ME-25—Tones of the Top Guitar 100 Songs, Vol. 4

	<i>Tone</i>	<i>Use for</i>	<i>Pickup</i>
1.	<i>In the style of</i> "Tom Sawyer"	Main rhythm	Hum
2.	<i>In the style of</i> "Rock Bottom"	Rhythm/lead	Hum
3.	<i>In the style of</i> "Suzie Q"	Solo	Hum
4.	<i>In the style of</i> "Raining Blood"	Rhythm/lead	SC
5.	<i>In the style of</i> "Hey Joe"	Main rhythm	SC
6.	<i>In the style of</i> "Buried Alive"	Clean tones	SC
7.	<i>In the style of</i> "Walk"	Distorted rhythms	Hum
8.	<i>In the style of</i> "Under The Bridge"	Main tone	SC
9.	<i>In the style of</i> "Freeway Jam"	Lead/melody	SC
10.	<i>In the style of</i> "The Pretender"	Main riffs	Hum
11.	<i>In the style of</i> "Last Resort"	Main rhythms	Hum
12.	<i>In the style of</i> "Creeping Death"	Main rhythms	Hum
13.	<i>In the style of</i> "Snuff"	Clean tones from live perf	Hum
14.	<i>In the style of</i> "Eye Of The Tiger"	Main rhythms	Hum

	<i>Tone</i>	<i>Use for</i>	<i>Pickup</i>
15.	<i>In the style of</i> "Cowboys From Hell"	Main riffs	Hum
16.	<i>In the style of</i> "Surfing With The Alien"	Main melody, wah engaged	Hum
17.	<i>In the style of</i> "Rockstar"	Main rhythm	SC
18.	<i>In the style of</i> "The A Team"	Main rhythm	SC
19.	<i>In the style of</i> "Rain Dance Maggie"	Main rhythm, wah engaged	SC
20.	<i>In the style of</i> "So Far Away"	Acoustic simulation	SC
21.	<i>In the style of</i> "Sweet Dreams"	Metal rhythm	Hum
22.	<i>In the style of</i> "Another Brick In The Wall"	Clean rhythm	SC
23.	<i>In the style of</i> "Little Black Submarines"	Distorted rhythms	Hum
24.	<i>In the style of</i> "When We Stand Together"	Acoustic simulation	SC
25.	<i>In the style of</i> "Running With The Devil"	Rhythm/solo	Hum