



ME-25 ReleaseNote



Tones of the Top 100 Guitar Songs, Vol. 2

© 2012 Roland Corporation U.S.
All rights reserved. No part of this publication may be reproduced in any form without the written permission of Roland Corporation U.S.

ME25RN02

A Note from BOSS

Each of these patches represents a tone from a famous song. Since some songs have multiple tracks with different tones, we chose the tone we felt was most identifiable with the song. Of course, your own guitar will affect the tone you get, so we're including recommendations with each patch as to whether you should use a single coil ("SC") or a humbucker ("Hum"). If you have both types, try using the suggested pickup first.

Whatever amp you use, start by using a clean setting with the Tone control set flat. (You can always quickly audition your amp's tone by engaging the ME's tuner—turning on the tuner bypasses the ME-25.)

To make the patches sound most exactly like their recordings, try and use the same guitar the artist originally used. On the other hand, you might just create a great tone by using a different guitar than the original artist. Enjoy your ME-25!

About Loading Your Downloaded Patches

When you load your new patches into your ME-25, they replace your existing User patches in the ME-25's memory. Since you probably want to keep your User patches, here's how to safely store them on your computer using the Librarian application that came with your ME-25. You can then re-load them whenever you want.



If you've already got the ME-25 Librarian installed and set up, you can jump now to "Backing Up Your User Patches" on page 3.

Setting Up and Understanding the ME-25 Librarian

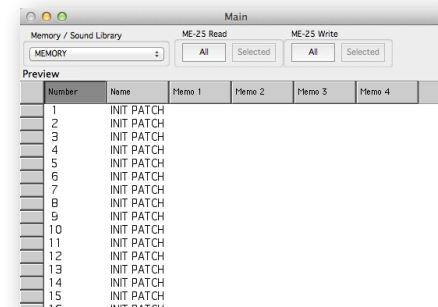
Installing and Configuring the Librarian

- 1 The ME-25's Librarian and driver software is available on the ME-25 Downloads tab at RolandUS.com. (Click [here](#).)
- 2 Download
 - *the ME-25 driver*—for your computer's operating system.
 - *the ME-25 Librarian*—for your computer's operating system.
- 3 Follow the included instructions to install the driver software.
- 4 Install the Librarian according to the included instructions.
- 5 Launch the Librarian.
- 6 Click the Setup menu, *Set Up MIDI Devices...*
- 7 Set the ME-25 as follows:
 - *Input*—ME-25
 - *Output*—ME-25

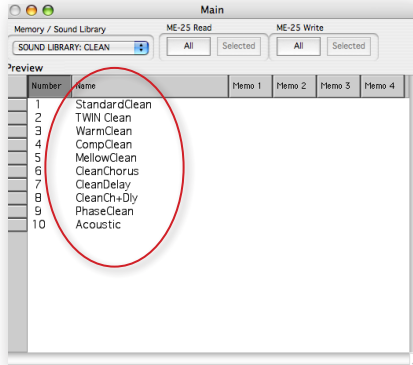
Understanding the Librarian

The Librarian has two types of windows:

- *the Main window*—shown below. The Main window exchanges patches with the ME-25.



- *library windows*—that contain collections of patches, such as the Acoustic window shown below. To get a patch or group of patches from a library into your ME-25, you must first copy them into the Librarian’s Main window. To add patches to a library, you copy them from the Main window.



Library files have a “.m2l” file extension.

- 3 After the data’s been retrieved from the ME-25, select **Duplicate** from the Librarian’s File menu—the Librarian creates a new library that contains all of the patches you grabbed from the ME-25.
- 4 Select **Save As...** from the file menu and select a location on your computer’s hard drive in which to store your User patches.



Library files have a “.m2l” file extension.

In the future, you can open this library and add or remove patches to keep all of your ME-25 patches stored in an order that makes sense to you.

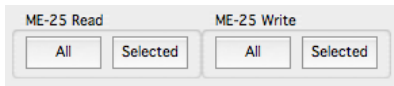
You can return patches to the ME-25’s memory by

- 1 opening the library
- 2 copying the desired patches into the Main Librarian window
- 3 sending them back to the ME-25 using the Write All or Write Selected buttons at the top of the Main window.

Backing Up Your User Patches

Now that you have the Librarian ready to go, here’s how to back up your existing User patches and then load your newly downloaded patches.

- 1 At the top of the Main Librarian window, there are four boxes:



You can retrieve all of the patches in the ME-25’s User bank for storage, or just the desired patches.

- 2 To grab
 - *all of the patches in the User bank*—click Read All.
 - *specific patches*—command-click (Mac) or control-click (Windows) the patches you want and click Read Selected.

Loading Your Downloaded Patches Into the ME-25

- 1 Open one of the new ME-25 library files you downloaded.
- 2 Copy and paste its patches into the Librarian’s Main window.
- 3 Click on Write All—or select only the desired new patches, and then click on Write Selected—to load the patches into the ME-25’s User memory.

ME-25—Tones of the Top Guitar 100 Songs, Vol. 2

	<i>Tone</i>	<i>Use for</i>	<i>Pickup</i>
1.	<i>In the style of</i> "Nothing Else Matters"	Clean rhythm	Hum
2.	<i>In the style of</i> "Rolling In The Deep"	Lead @ approx 2:40	SC
3.	<i>In the style of</i> "Somebody I Used To Know"	Wobbly lead	SC
4.	<i>In the style of</i> "Someone Like You"	Clean guitar subs for piano	SC
5.	<i>In the style of</i> "Fade To Black"	Metal rhythms	Hum
6.	<i>In the style of</i> "One"	Clean riffs	Hum
7.	<i>In the style of</i> "Cannon Rock"	Leads	Hum
8.	<i>In the style of</i> "Obscure Words"	Main riffs	Hum
9.	<i>In the style of</i> "Pumped Up Kids"	Surf solo @ approx 2:40	SC
10.	<i>In the style of</i> "Paradise"	Solo	Hum
11.	<i>In the style of</i> "Californication"	Main rhythm	Hum
12.	<i>In the style of</i> "Don't Cry"	Clean rhythms	Hum
13.	<i>In the style of</i> "Enter Sandman"	Metal rhythms	Hum
14.	<i>In the style of</i> "Prepare For War"	Metal rhythms	Hum

	<i>Tone</i>	<i>Use for</i>	<i>Pickup</i>
15.	<i>In the style of</i> "Tush"	Main riffs	SC
16.	<i>In the style of</i> "Seek And Destroy"	Main riffs	Hum
17.	<i>In the style of</i> "Comfortably Numb"	Solo	SC
18.	<i>In the style of</i> "Come As You Are"	Main clean (rhythm=SC)	Hum
19.	<i>In the style of</i> "Sweet Home Alabama"	Intro/main Rhythm	SC
20.	<i>In the style of</i> "Smoke On The Water"	Main rhythm	SC
21.	<i>In the style of</i> "The Day That Never Comes"	Main rhythm	Hum
22.	<i>In the style of</i> "Fire And Flames"	Leads/rhythms	Hum
23.	<i>In the style of</i> "Johnny B Goode"	Solo/rhythms	Hum
24.	<i>In the style of</i> "Stairway To Heaven"	Clean rhythm	Hum
25.	<i>In the style of</i> "Fear Of The Dark"	Main rhythm	Hum